

## He raungāwari ngā rā mahi

It is important to me to have a life as well as a career and psychiatry lets you do that



## Noho ki ngā tangata whaiora

Psychiatry is extremely rewarding... it is enormously satisfying to observe the positive impact you make on people's lives

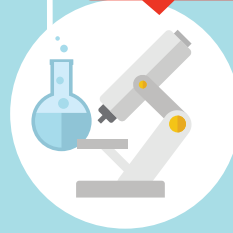


## Rongoā torowhānui

The interface of brain and mind is a fascinating area

## Ngā rongoā pai, e ai ki ngā taunaki rangahau

We are at the frontier of medical research



## Panonitia tō ao

Be sought after all over Australia and New Zealand

## He maha ngā wāhi mahi



Many psychiatrists split up the working week between 2-3 different settings

# He mātanga hinengaro

## Nōu tēnei huarahi

Approximately 45% of Australians<sup>1</sup> and New Zealanders<sup>2</sup> may experience a mental health condition in their lifetime



## Māu tō huarahi e whiri

Addiction  
 Old age Indigenous mental health  
 Forensic Refugee Transcultural  
 Intellectual and developmental disabilities Neuropsychiatry  
 Adult  
 Child and adolescent  
 Consultation-liaison Perinatal and Infant Rural  
 Psychotherapy

## Whakaaro kaurapa



You have the scope to use your own individual skills instead of a set treatment formula

## He maha ngā puna mahi

We work with a team of health professionals

