



Government Funded Training Posts Orientation Webinar

April 2025



Specialist Training Program (STP)

Experience a variety of rewarding and valuable vocational training opportunities through the Specialist Training Program

The Specialist Training Program (STP) is an Australian Government funded initiative which aims to improve the quality of the future specialist workforce by providing Registrars with exposure to a broader range of healthcare settings.

The STP seeks to extend vocational training for specialist registrars into settings outside traditional metropolitan teaching hospitals, including regional, rural, remote and private facilities.

What training experiences are available through the STP on my journey to Fellowship?

The STP includes:

- Specialist Training Placements and support – completion of a training rotation at a priority setting.
- Integrated Rural Training Pipeline (IRTP) – completion of at least two thirds of the RANZCP training pathway in a rural setting.
- Psychiatry Workforce Program (PWP) – completion of training rotations in priority areas
- Tasmanian Project – completion of the RANZCP Fellowship Program in Tasmania.



History of the Program

The Commonwealth has been supporting the provision of specialist training arrangements in rural and outer metropolitan areas since 1997. Following consolidation of a number of programs in 2010 the Government announced the National Health and Hospitals Network initiative “Expand and Enhance the Specialist Training Program”. This provided resources to increase the number of specialist training places to be made available under the Program which continues today.

The Tasmanian Project was developed and implemented with the aims of supporting the training and retention of specialists in the state, in addition to Tasmanian-based STP, IRTP and PWP posts. This initiative was implemented in 2014 with a target of 51 FTE training posts across 10 colleges with the support of 14.42 FTE supervisors.

The Integrated Rural Training Pipeline (IRTP) measure, announced in December 2015, supports an additional 100 STP posts in rural areas. This measure requires the post to be in a rural area (MM 2-7) and all trainees in that post must complete at least two thirds of their total Fellowship training in a rural area.



What does the **STP** mean for **psychiatry**?

The aims of the STP in psychiatry are to:

- Enhance the capacity of the health care sector to provide high quality training opportunities
- Facilitate the required educational experiences for specialists in training
- Support high quality training posts to build the overall training capacity in the system

STP Training Placements

STP posts involve a rotation in posts located in primary settings (such as; regional, rural or remote, private sector and non-hospital settings such as Aboriginal Medical Services, aged care, community health organisations).

You are eligible for a STP training post if you are:

A trainee registered on the RANZCP Pathway to Fellowship.

A Specialist International Medical Graduate (SIMG) on either the Partially or Substantially Comparable Pathway to RANZCP Fellowship.

Training for a minimum six-month rotation. You may be offered the opportunity to stay in the post for two rotations, after which you will move to other opportunities.



Increasing the workforce
in areas of need, to **bring
mental health** to areas where
access to healthcare is limited.

Committed to **training** in **regional, rural or** **remote settings?**

Integrated Rural Training **Pipeline (IRTP)**

The Integrated Rural Training Pipeline (IRTP) provides a unique training opportunity for psychiatry trainees interested in completing training primarily in regional, rural or remote settings.

The Whole of Pathway Model

Trainees complete a target of 75% (66% minimum) of their entire Fellowship training program within a regional, rural or remote setting.

The Stage 3 Model

Trainees will complete their stage 3 specialist training within a regional, rural or remote setting.

The Whole of Pathway Model

You are eligible for an IRTP training placement if you are:

- A trainee registered with a RANZCP Fellowship training program.
- You show commitment to completing the entirety of your training in a Modified Monash Model (MM) 2-7 area, preferably within the region or health service the post is based in.
- Your health service has a high level of confidence that you will complete a target of 75% of your Fellowship training within an MM 2-7 area.

The Stage 3 model

- A trainee registered with a RANZCP Fellowship training program.
- You must have already completed a minimum of 60% of your specialist training.





Regional Training Hubs

Aimed at increasing the number of psychiatry trainees and specialists in regional, rural and remote areas

What is a regional training hub?

Aimed at increasing the number of psychiatry trainees and specialists in rural and regional areas, the Department of Health and Aged Care as part of the IRTP program has established 26 regional training hubs to work with local health services to help students through the medical training pipeline.

A regional training hub is a team of people at an established Rural Health Multidisciplinary Training Program location.

[Click here to find out more!](#)

Tasmanian Project

The STP Tasmanian Project supports psychiatry training in Tasmania by funding:

- 3 FTE Training Specialist Doctors in Tasmanian training posts.
- 1.31 FTE Training Supervisor posts.

The STP also supports training in Tasmania by providing funds to:

- Enable eminent psychiatrists and other specialists to be brought to Tasmania to present tutorials in the Formal Education Course.
- Subsidised workshops for trainees.
- Maintain tutorials for first year trainees.

Additional support for Tasmania-based trainees includes:

- Educational grants
- Congress grants
- Locally run activities

What is the difference between **STP** and **IRTP**?

Training posts funded in the IRTP program differ from STP posts as the funding 'follows' the trainee through multiple rotations at a health service, allowing the trainee to undertake all mandatory and elective rotations to achieve Fellowship.

Funding for STP Programs

For STP posts this includes:

Salary Contribution - The STP provides organisations with pro rata salary contributions for each post, per full time equivalent (FTE) per year.

Rural loading - AGFTP Posts in MM 2-7 areas of Australia may be eligible for additional pro-rata funding, per full time equivalent (FTE), per year. Rural Loading assists with additional costs associated with maintaining posts outside of metropolitan settings.

Psychiatry Workforce Program (PWP) - The PWP program has been established to address mental health workforce maldistribution and shortages and aims to improve access to mental health care for Australians with a focus on those in rural and remote areas. The PWP provides funding for salary contributions per training year for one full time equivalent trainee and for a training supervisor at .33 full time equivalent.

Private Infrastructure and Clinical Supervision (PICS) - Under the Private Infrastructure and Clinical Supervision Allowance (PICS), private-sector organisations may be eligible for funds to cover infrastructure and clinical supervision. For each private-sector FTE training post the maximum amount available is \$30,000 (GST exclusive) pro-rata per full time equivalent (FTE).

For IRTP Posts this includes:

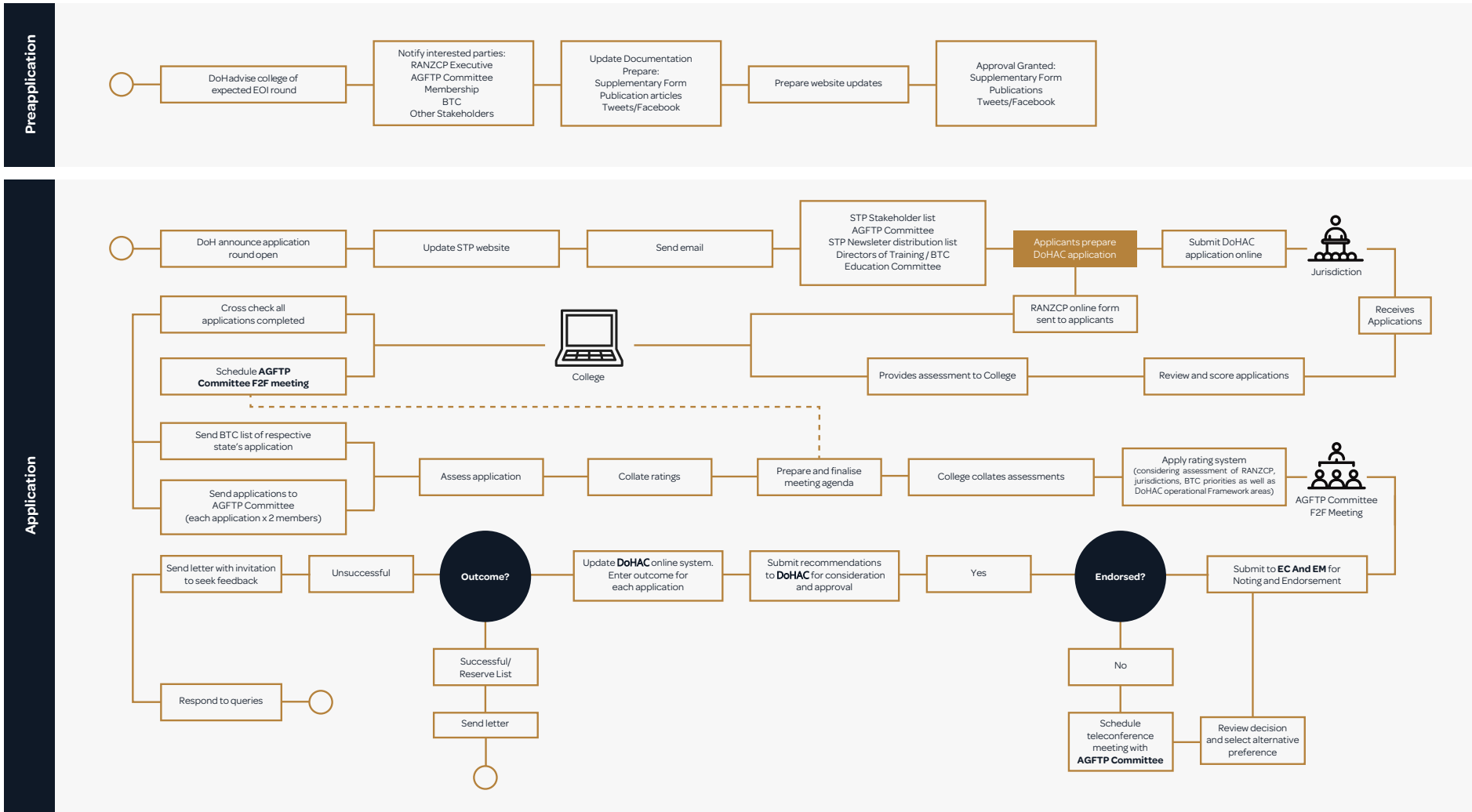
Salary Contribution - The IRTP provides organisations pro rata salary contributions, per full time equivalent (FTE), per year. The amount provided includes Rural Loading and Private Infrastructure Clinical Supervision allowances which a health service are expected to use following the same guidelines as STP.

How health services claim their STP funding

Health Services with STP funded posts are required to complete a **progress report** twice a year, at the end of each rotation, which includes information on the location a trainee has delivered services or undertaken training. The progress reports are required to claim funding for the next instalment.



How are STP/IRTP Posts established?

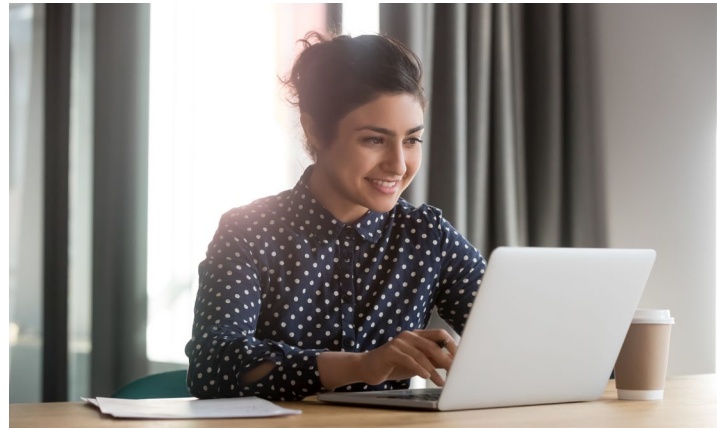


AGFTP Australian Government Funded Training Programs
BTC Committee Branch Training Committee
DoHAC Department of Health and Aged Care
EC Education Committee

EM Executive Meeting
RANZCP Royal Australian and New Zealand College of Psychiatrists
STP Specialist Training Program

For more information ranzcp.org/stp

What supports are available through the STP on my journey to Fellowship?



Training Pathway Support

Initiatives to support the recruitment and retention of the Aboriginal and Torres Strait Islander psychiatry workforce.

Back to Country Grants

Back to Country Grants of up to A\$3,000 are available for Aboriginal and Torres Strait Islander trainees to support their return to Country for cultural responsibilities, family obligations, and to reconnect with culture and community for personal wellbeing. For more information or to apply, please visit [Back to Country Grants](#).

The Yarning Network

The Yarning Network includes support projects such as the Aboriginal and Torres Strait Islander Trainee Forums, which allow trainees to network, discuss their training experiences, and provide feedback to the College on how to improve our supports. It also includes the Peer Support Program which matches peers and new trainees to provide informal support, and the Induction Program which inducts new trainees into the College.

Support Projects at AIDA 2025

The RANZCP is pleased to continue our support of the Australian Indigenous Doctors' Association (AIDA) at their annual conference in November 2025. An in-person Aboriginal and Torres Strait Islander Trainee Forum will be delivered to psychiatry trainees during the event, along with the 'Insights to Psychiatry' workshop for medical students and junior medical officers (JMOs) which aims to explore various aspects of psychiatry to support the recruitment of the Aboriginal and Torres Strait Islander psychiatry workforce.

Transition to Consultant Workshop

The RANZCP has secured funding to deliver a new Transition to Consultant workshop for final stage Aboriginal and Torres Strait Islander trainees. The workshop aims to deliver targeted support, in a culturally safe environment for senior registrars who would soon transition into a consultancy role by providing advice on consultant requirements, and what to expect with responsibilities and challenges of a new role at the consultant level.

Jurisdictional Rural Trainee Networking Pilot

The AGFTP is launching a new support initiative in 2025 for trainees in Queensland and Western Australia who are in regional, rural, or remote training areas (MM2-7). The virtual trainee forums will be held this year, offering trainees an opportunity to connect online and discuss any challenges they may be facing in their training. These forums are designed to unite trainees from rural areas across Australia and provide them with a supportive network that fosters their continued progress toward RANZCP Fellowship.

Scholarly Project Supervision

This project aims to connect trainees with suitable supervisors, exploring metropolitan-based and rural clinic school options. The support is available to trainees in STP and PWP funded training posts, and will match supervisors for their scholarly project, by doing so this will enable trainees to remain in rural locations whilst undertaking their scholarly project. The Scholarly Project Supervision will assist rural trainees in STP and PWP funded post to progress on the pathway to Fellowship, and access training support for this assessment activity.

Rural Educational Grants

Provision of grants of up to A\$1,500 are available for trainees in STP funded posts (including IRTP and Tasmanian Project) and Psychiatry Workforce Program (PWP) funded posts located in rural areas, to access educational programs related to their RANZCP training. For more information or to apply, please visit [Rural Educational Grants](#).

Supporting Regional, Rural and Remote Training

The Rural Psychiatry Roadmap 2021 - 2031 was approved by the RANZCP Board in 2020 as a ten-year strategy to help address the current disparity in mental health outcomes for the large and diverse population of Australians and New Zealanders who live outside urban centers. The Rural Psychiatry Training Pathways Team is responsible for delivery of the Roadmap and for pursuing a reform agenda for training and practice in rural locations.



Trainee Surveys

As part of the College's quality assurance of government funded training programs, feedback is sought from trainees and SIMG on their experiences in Australian Government Funded Training Program (AGFTP) posts.

AGFTP surveys are distributed at the end of each rotation and are your opportunity to give feedback on:

- The work involved in the post.
- The training experience.
- Supervision support.
- Benefits and challenges.
- Overall experience with the post.
- And assist in the improvement of the program.

In addition to AGFTP Surveys, IRTP Surveys are distributed at the end of each training year to those who have recently occupied an IRTP training post. The IRTP Survey also encompasses:

- Interaction with the Regional Training Hub.
- Aspirations for the future.

What is involved?

Completion of a survey which will take approximately 10 – 15 minutes. If you have worked in more than one post, you will be requested to complete the survey for each post.

By fully completing the survey, you have the opportunity to be entered into a prize draw with the opportunity to win:

- › 1 x \$500 gift card for AGFTP and IRTP
or
- › 2 x \$100 gift card for AGFTP
- › 1 x \$100 gift card for IRTP





Other supports available on my journey to Fellowship

RANZCP Training Program

Within your training setting you will have access to supervisors and other staff to help you on along the pathway. Your Director of Training will also be essential to your progression; liaise with them regularly to ensure the highest level of support. The RANZCP website provides a wealth of information to help you progress on your pathway to Fellowship.

College staff are also on hand to help you understand the specific requirements for each rotation including:

Workplace Assessments

WBA
EPA
ITA

College Administered Assessments

Multiple Choice Question Exam
Critical Essay Question Exam
Modified Essay Questions Exam
Clinical Competency Assessment
Psychotherapy Written Case
Scholarly Project

Exemplars for most of the College administered assessments are available to provide you with a better understanding of what is required to be able to complete and progress on your pathway.

Member Welfare Support Line

Confidential advice is available to all members of the RANZCP. Call for support on any issue that affects your physical or mental wellbeing.

Call 1800 941 002 or email support@ranzcp.org

The support line is available 8.30am to 5pm AEST Monday to Friday (or call out of hours and leave a message to receive a call back).

The Royal Australian and New Zealand College of Psychiatrists has received Australian Government Funding under the Specialist Training Program for this initiative. All information is correct as at Rotation 1, 2025.

For further information visit ranzcp.org/stp

